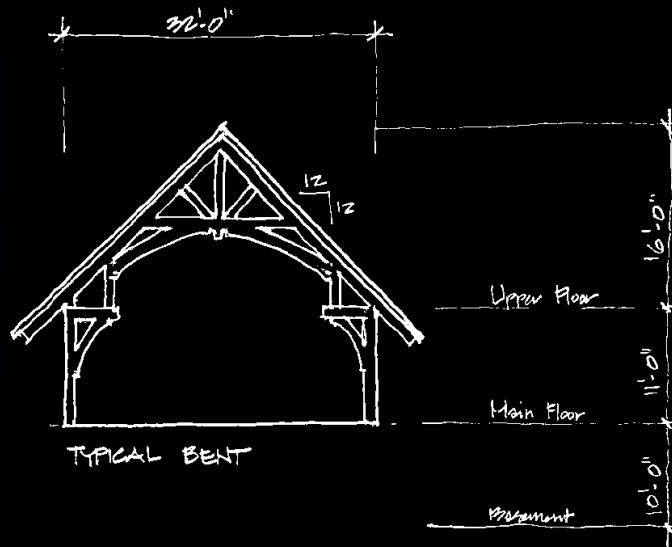


WELCOME TO A DIFFERENT WAY TO BUILD YOUR DREAM HOME.

What do you get when an MBA with an investment banking background, a founding member of the Timber Framers Guild with 25 years of timber frame design experience and an architect with a passion for timber framing come together to create a timber frame company? You get a better way of going about achieving your dream of being in a beautifully architected and crafted home. We have come together to marry timeless design techniques with traditional craftsmanship, high speed machinery and a process like no other. In doing so we are able to deliver a truly unique approach that results in a home that meets the aesthetic requirements, livability needs and budget parameters set forth by our clients. So take a minute or two to learn more about us and you'll see one thing is clear, we are anything but business as usual.



8010 Ridge Road, Suite F • Richmond, VA 23229

888.778.8010 phone • 888.674.9151 fax

www.streamlinetimberworks.com

Printed on 100% Recycled Paper



We've Streamlined the Process,
Improved the Techniques and
Upheld the Integrity of the Craft.





WE LEAD THE PROCESS, BUT TEAMWORK BUILDS THE HOUSE

As an integrated team, our local general contractor partner, StreamLine and you follow an efficient process designed to create a mutual understanding of all of the parameters required to have a successful project. StreamLine's breadth of services that it can bring to the project is:

- * Full Service Architectural Design,
- * Timber Frame Design,
- * Timber Frame Fabrication and Installation,
- * Structural Insulated Panel Roof and Wall Systems,
- * Ceiling Decking,
- * Doors, Cabinets and Millwork.

WE DELIVER A BUSINESS LIKE APPROACH TO DESIGNING AND BUILDING A HOME

One of the keys to a successful business and to a successful home building process is good decision making. And to make good decisions you need good information. That is why we focus on systematic knowledge transfer across the entire team to close the ever present gap between programming and budget as early as possible. By doing so, you get quality information about aesthetic design and construction budgets much earlier than normal. As a result, you are able to make informed decisions before you have invested too much time or money. This makes for a much smoother process for everyone and a home that meets your needs and dreams.



BESIDES CREATING A SENSE OF WARMTH, SPACE AND TRADITION THAT NO OTHER BUILDING STYLE CAN OFFER, TIMBER FRAMING ALSO:

- * Is engineered to the highest level of accuracy and quality,
- * Significantly simplifies on-site construction,
- * Brings predictability and greater control to the construction process,
- * Meets and often exceeds all current building regulations,
- * Performs well in terms of fire and flood resistance,
- * Has fewer defects and high customer satisfaction,
- * Allows significant versatility for exterior finishes from stucco to board and batten and
- * Is by far the most environmentally friendly way to build.



The StreamLine Program

with Three Distinct Phases

The StreamLine Program is an integrated home design and building process focused on delivering the highest quality custom designed timber framed home that meets the aesthetic requirements, livability needs and budget parameters set forth by the customer.

INVEST IN CLARITY

- * Planning phase to close the gap between programming and budget
- * Sets the project up for success
- * Full team involvement
- * Budget and Aesthetic definition
- * Phase ends with Clarity Meeting
- * **Primary Contact** – StreamLine
- * **Average Time** – 2-3 months

PAPER PHASE

- * Design development
- * Construction documents
- * Timber Frame modeled
- * Budget review and refinement
- * Production meeting
- * **Primary Contact** – StreamLine
- * **Average Time** – 3-5 months

CONSTRUCTION PHASE

- * Site clearing
- * Foundation work
- * Timber framing
- * Finish work
- * Move in
- * **Primary Contact** – Builder Partner
- * **Average Time** – 10-14 months