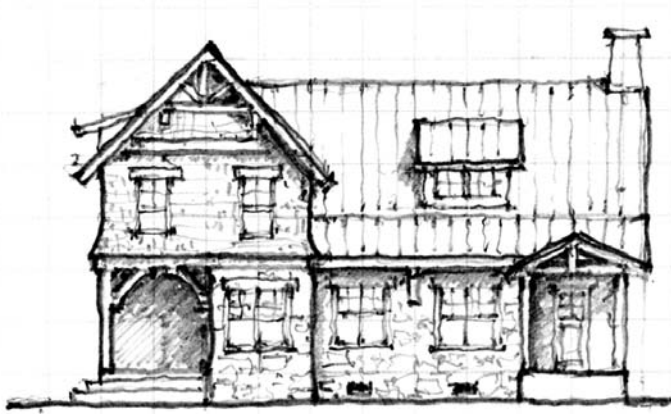




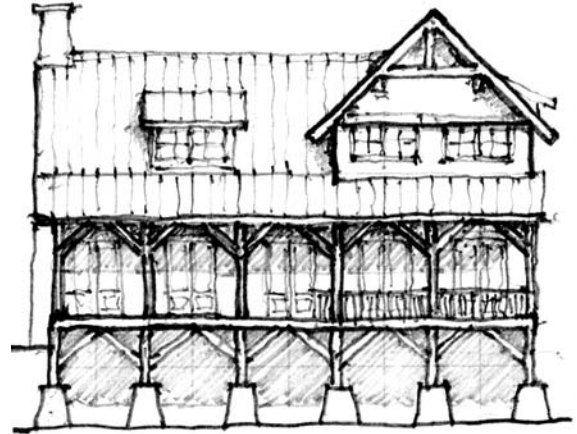
STREAMLINE
ARCHITECTS

OLD WORLD CRAFTSMANSHIP meets STATE-OF-THE ART TECHNIQUES



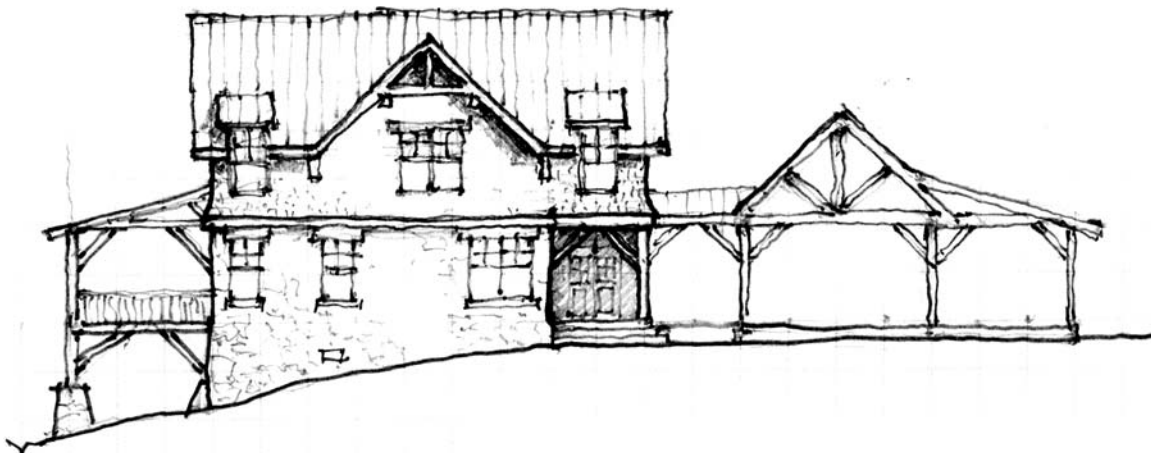
FRONT ELEVATION

$\frac{1}{16}'' = 1'-0''$



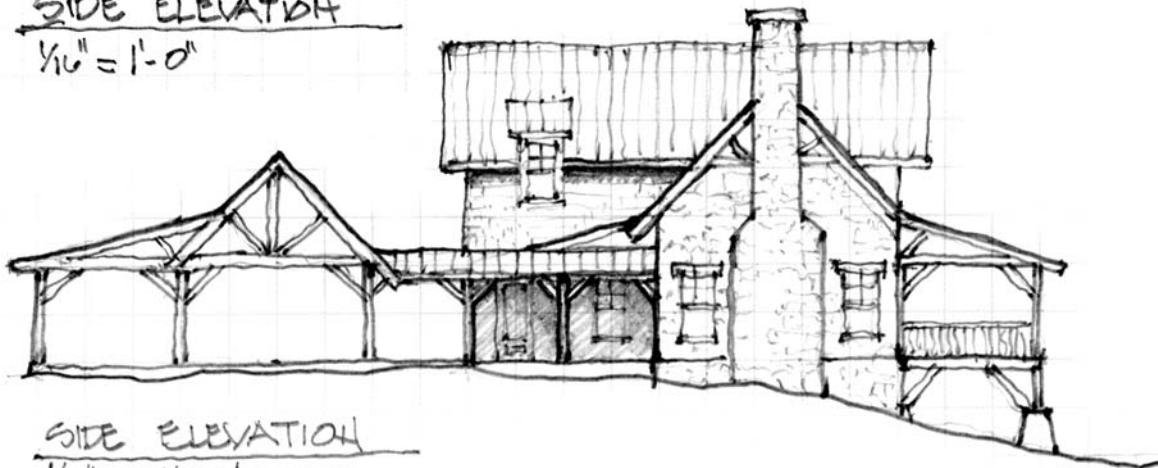
BACK ELEVATION

$\frac{1}{16}'' = 1'-0''$



SIDE ELEVATION

$\frac{1}{16}'' = 1'-0''$

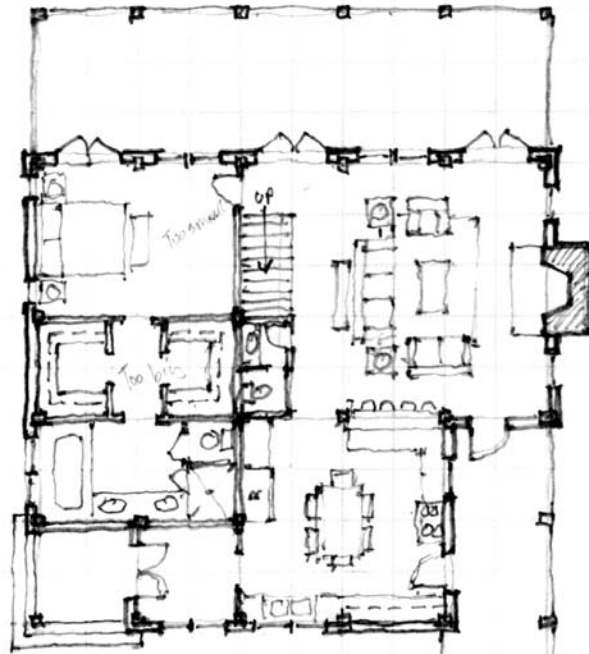


SIDE ELEVATION

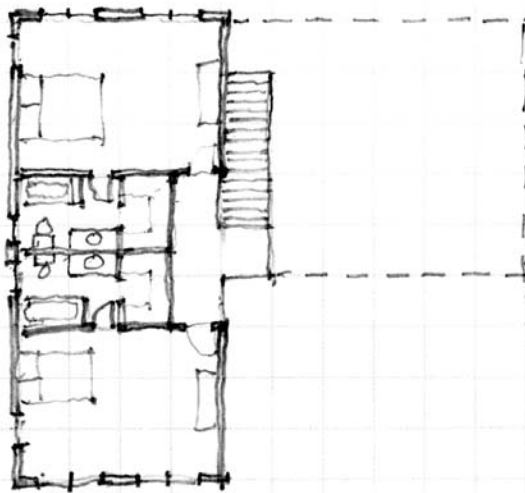
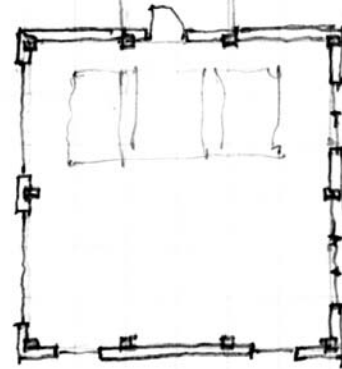
$\frac{1}{16}'' = 1'-0''$

STONY FORK

www.streamlinetimberworks.com • 888.778.8010 phone



① FLOOR LEVEL -1 1400 #
SCALE: 1/16" = 1'-0"



② FLOOR LEVEL -2 450 #
SCALE: 1/16" = 1'-0"